



ASKING PRICE

**£175,000**

**Cambridge Road**  
Greater London, BR1 4EA

**GARETH**  
**JAMES**

## PROPERTY SUMMARY

Quaint one-bedroom apartment situated within a modern development, conveniently located just a short distance from Bromley Town Centre.

1



1



1



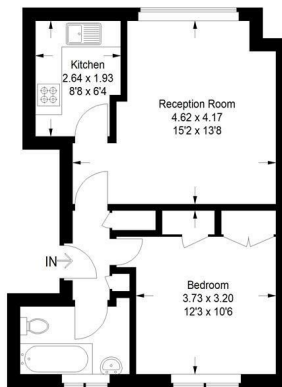






**Laurel Court, BR1**

Approximate Gross Internal Area  
41.5 sq m / 447 sq ft



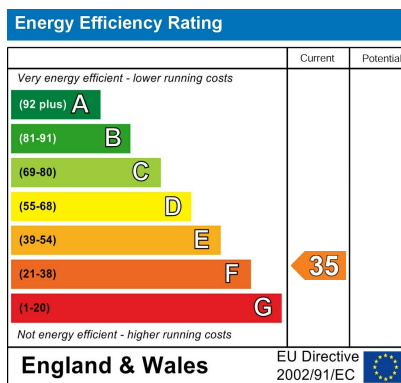
**First Floor**

This plan is for layout guidance only. Not drawn to scale unless stated. Windows and door openings are approximate. Whilst every care is taken in the preparation of this plan, please check all dimensions, shapes and compass bearings before making any decisions reliant upon them. (ID1314813)

1 |

1 |

1 |



Agents Note: Whilst every care has been taken to prepare these particulars, they are for guidance purposes only. All measurements are approximate and are for general guidance purposes only and whilst every care has been taken to ensure their accuracy, they should not be relied upon and potential buyers/tenants are advised to recheck the measurements

<b>GARETH JAMES</b>	<b>OFFICE ADDRESS</b>	<b>OFFICE DETAILS</b>
	129 Bellenden Road London SE15 4QY	02077324330 sales@garethjames.com <a href="https://www.garethjames.com/">https://www.garethjames.com/</a>